



# Baby girl

[www.roland-designs.com](http://www.roland-designs.com)

A sweet little birth sampler for a baby girl, of course you can always change the color scheme and make it for a boy.

Just use the extra grid and alphabet to chart your own child's name, birthdate, weight, and time of birth.



**Grid Size:** 98W x 112H  
**Design Area:** (96 x 110 stitches)

**Legend: Stitches**

■	DMC 307	lemon
◇	DMC 741	tangerine - md
▲	DMC 666	christmas red - br
✕	DMC 3607	plum - lt
♣	DMC 813	blue - lt
♥	DMC 989	forest green
★	DMC 5200 & 100HL	snow white blended with White Hi Lustre Kreinik blending filament 100HL
⊖	DMC 963	dusty rose - ul vy lt
✕	DMC 962	dusty rose - md
Ж	DMC 3826	golden brown
0	DMC 948	tawny - vy lt
1	DMC 211	lavender - lt
2	DMC 208	grape - lt
3	DMC 743	yellow - md

**Legend: FrenchKnots**

DMC 962      dusty rose - md

**Legend: BackStitch Lines**

DMC 310      black  
DMC 367      pistachio green – dk

Angel wings can be done in backstitch with a single thread of DMC metallic floss in silver 5283

**Size** 6,86" x 7,86" inches on 14 ct aida, or 28 ct linen

Because of the backstitch I would recommend using linen, but aida is fine also.

There are some little details in the sampler that need attention.

The backstitch is done with one thread , and the French knots can be exchanged with a little seed bead.

If you are not able to get ahold of Kreinik filaments for blending you can simply make the wings in white, or another shimmery thread.

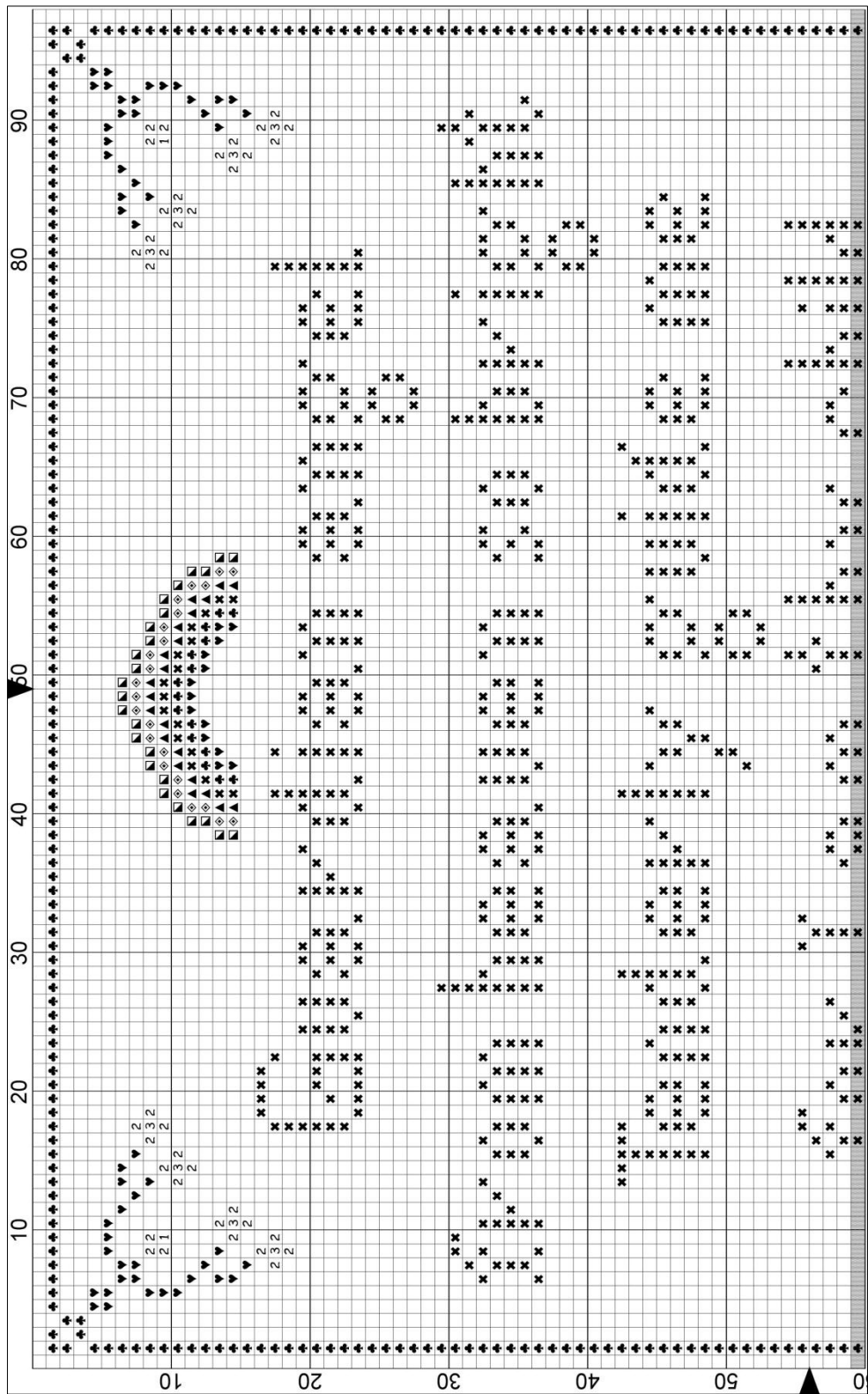
Work all the cross stitch before you do the back stitch on the angel. The backstitch looks best if done with a sharp needle.

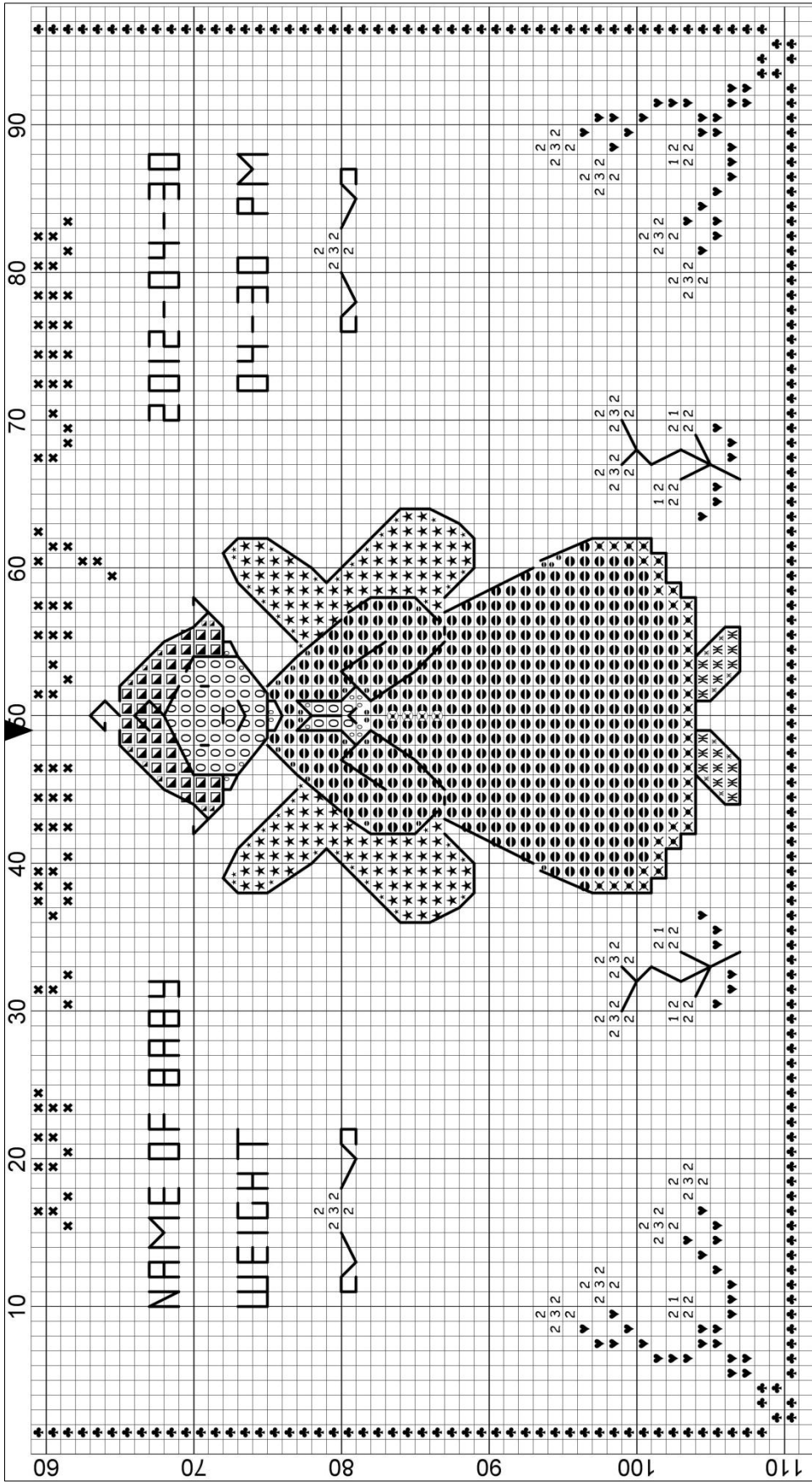
The half cross stitch are a little tricky, but they add to the charm of the picture. That is why I've added a larger picture of the angel, take your time and it will come out beautiful.

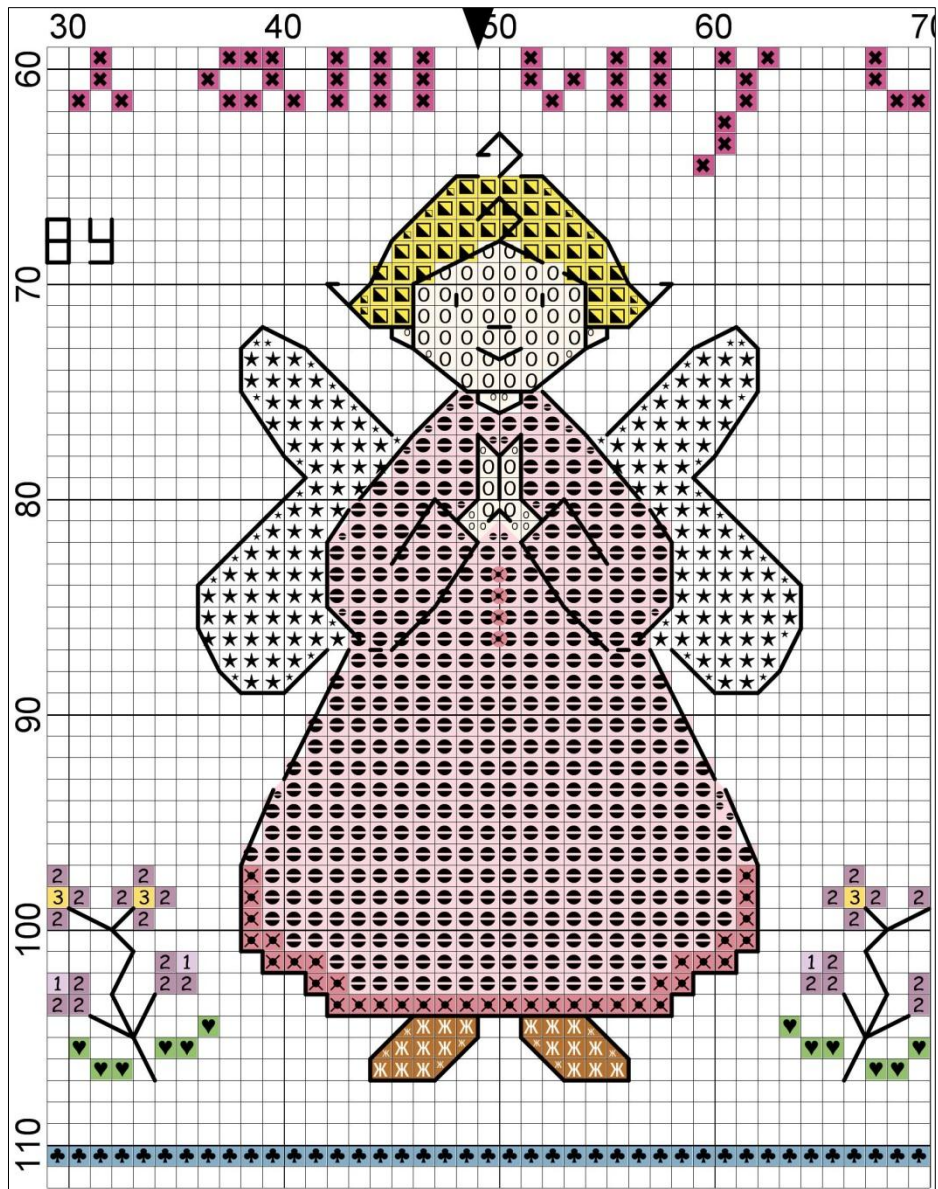


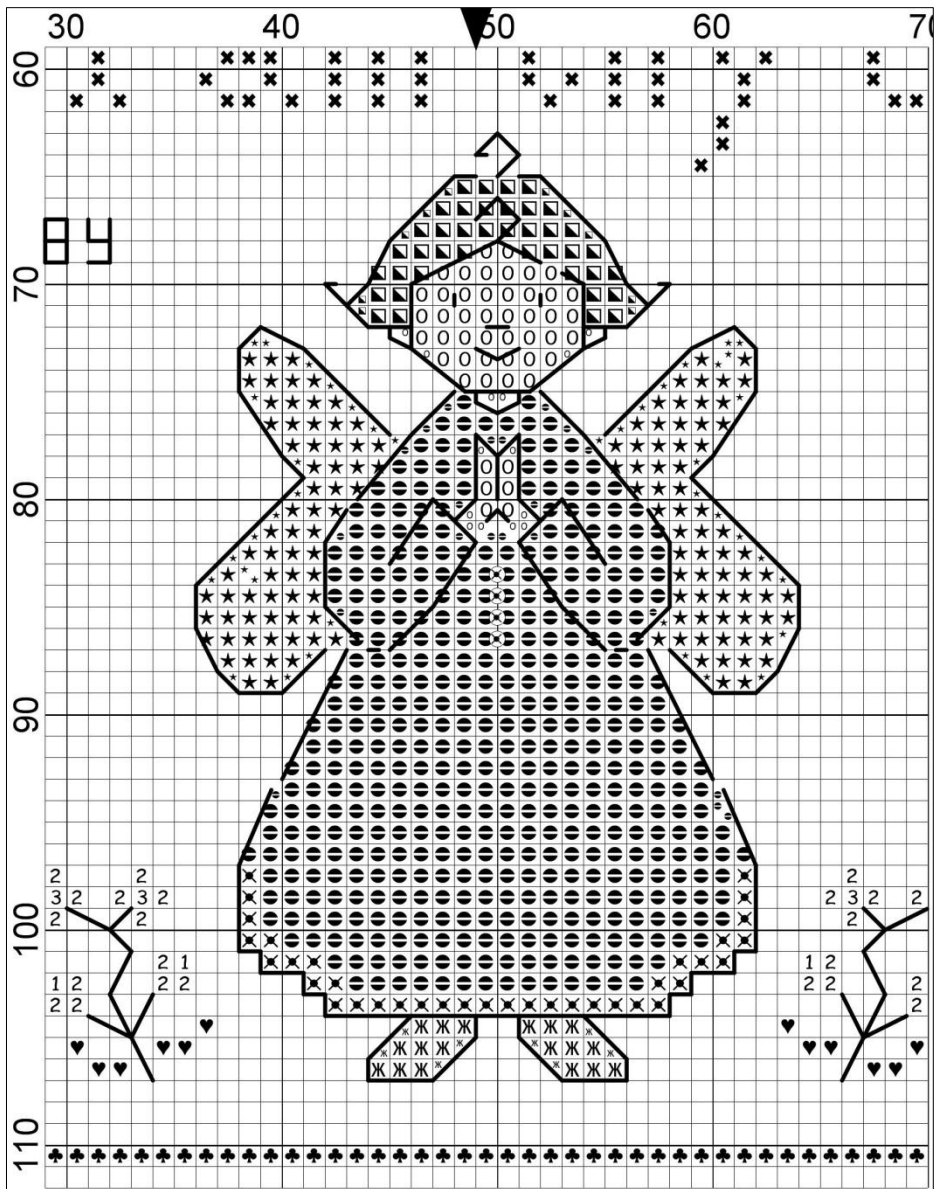




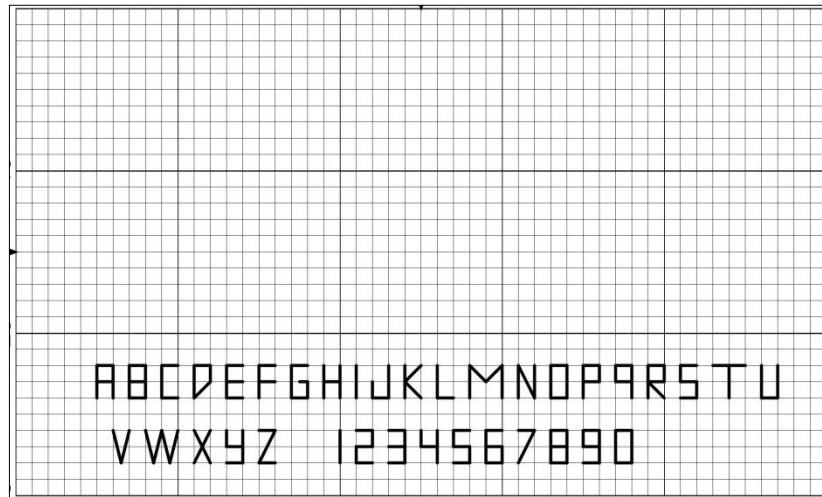












Use this little chart and alphabet to spell out the name, date, etc....

I suggest writing it out on the graph, then cutting and gluing it on the original chart, that way you can see exactly where you want to have it.